

## Everlast Structures Barndominium Buying Process

### Step 1: Initial Consultation

- Schedule a phone consultation with your Everlast Structures Project Development Representative to discuss your vision and outline your goals.
- Confirm if your project is located in an area where Everlast Structures offers turnkey barndominium builds or shell-only construction.
- Discuss rough pricing per square foot based on recently completed projects (see general pricing below). These estimates provide a general idea of costs and may vary depending on project complexity and materials.

Turn Key \$\$\$	Basic Setup \$\$	Building Only \$
 <p><b>The premium option</b> Start-to-finish, turnkey results. Your time is valuable, we'll take care of it.</p>	 <p><b>The superior option</b> Site prep, footing and the building shell. We lay the groundwork, you handle the rest.</p>	 <p><b>The building-only option</b> You handle the excavation and concrete, we'll provide the labor to erect the shell. <i>*We don't provide material only kits</i></p>

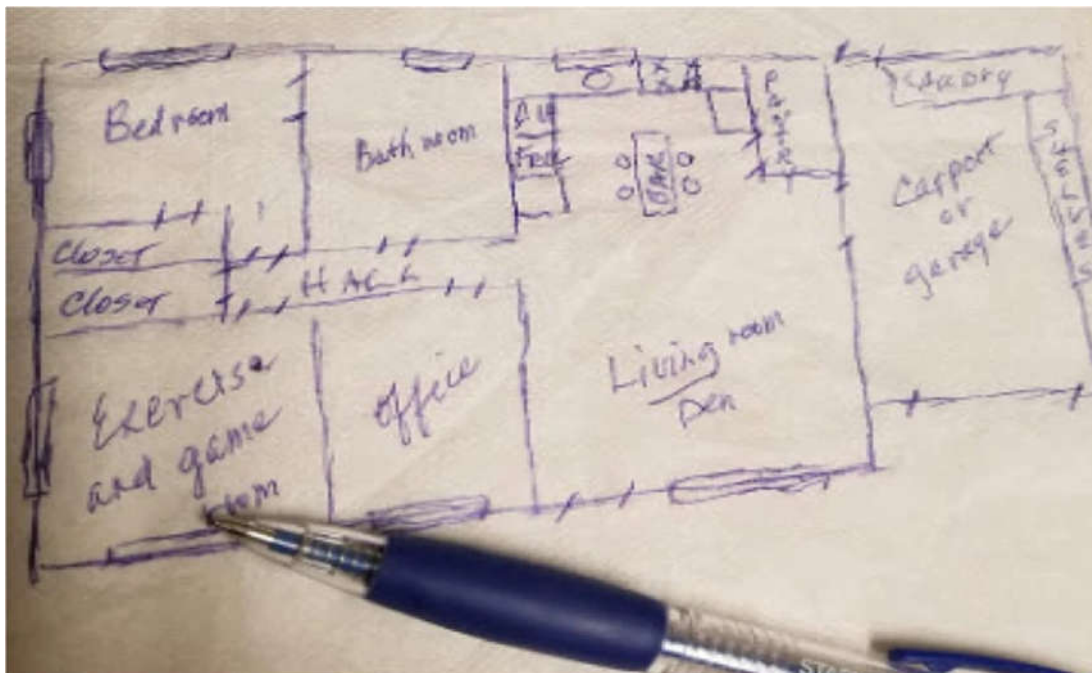


**To proceed to Step 2, you must enter a design agreement with Everlast Structures.**

## Step 2: Concept Development

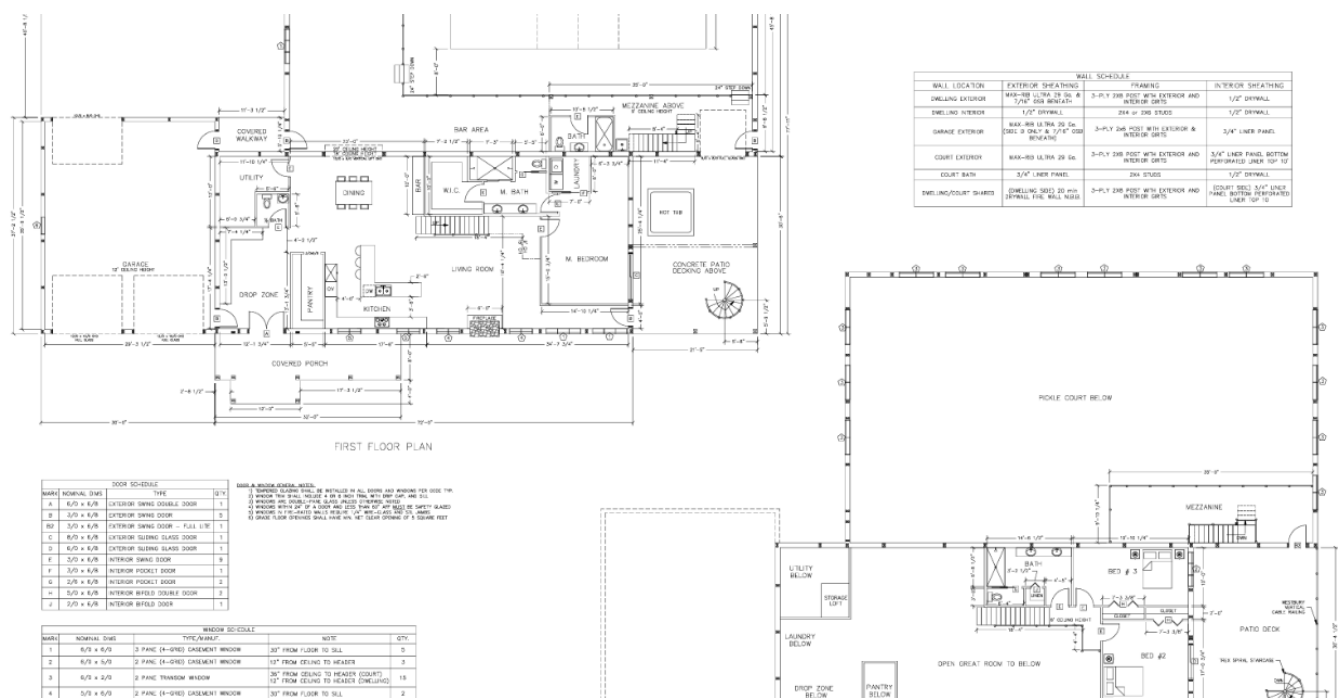
- Share a simple "napkin sketch" or inspiration from online sources to convey your vision.
- The designer will create a conceptual design that outlines your vision with minimal details, anticipating significant revisions during the process. Over time, the designer will refine the design, adding more details.
- Up to five revisions are included in the design agreement. Additional revisions beyond five are billed at \$75 per hour.
- The design will feature symbolic representations of items like toilets, vanities, showers, tubs, assumed kitchen cabinet layouts, and island locations. Detailed Mechanical, Electrical, and Plumbing (MEP) designs are not included.
- A kitchen designer must be commissioned through Everlast Structures or independently by the customer to finalize layouts for cabinets and vanities. Cabinet layouts may influence the interior design and should be completed before final construction drawings are prepared.

*This process can take between 1.5 to 3 months, depending on the complexity of the project and revisions.*



Step 3: Final Revisions and Pricing

- Review the final conceptual designs with our team and subcontractors to ensure the plans align with your expectations.
- Provide final feedback to Everlast Structures, subcontractors, and suppliers, making necessary adjustments to the exterior and interior layout.
- Finalize the conceptual design, ensuring all structural and exterior details are ready for permitting and construction.
- Finalize pricing and budget items.
- Review and sign the contract.



After accepting the final proposal, your Project Development Representative will outline a timeline and schedule, turning your planning into the reality of your dream barndominium.

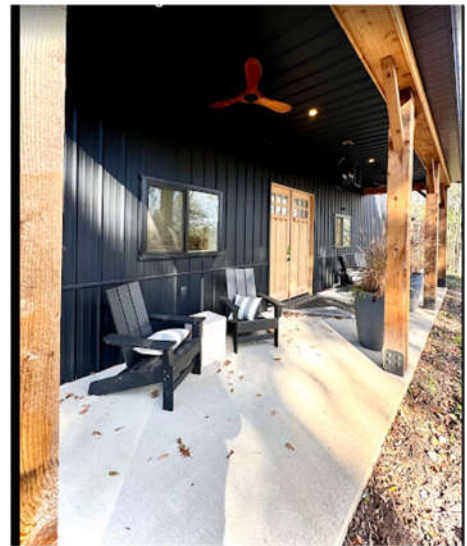


### **So how much is the design agreement?**

General Cost: \$1 per square foot, with a minimum fee of \$2,500.

### **What's Included:**

- Up to five revisions of the conceptual design. Additional revisions beyond five are billed at \$75 per hour.
- Floor plans and elevations focused on exterior, interior, and structural elements.
- Excludes detailed MEP plans, surveys, or foundation plans.



### **Barndominium Overview**

Whether Everlast Structures completes your entire barndominium or just the shell, you'll enjoy these benefits:

Maintenance-Free Exteriors: Durable materials that offer long-term savings.

Premium Metal Roof: Designed for longevity and energy efficiency.

Incredible Aesthetics: A blend of modern and rustic appeal.

Energy Efficiency: High-performance insulation and design for optimal energy use.



## Price Range:

**Complete Barndominium:** \$160 to \$325 per square foot, depending on design complexity and finishes.

**Shell-Only Construction:** \$75 to \$120 per square foot, depending on materials and scope of work.

**Unfinished Garages and Porches:** \$50 to \$120 per square foot, depending on size and design.

Everlast Structures brings your vision to life with exceptional craftsmanship and personalized designs. As proud members of the NFBA with an A+ Better Business Bureau rating and a 5-star Google rating, we specialize in custom barndominiums, equestrian facilities, and storage solutions. Our transparent pricing, permitting expertise, and commitment to quality ensure a seamless process from start to finish. Follow us on Facebook and Instagram to see our latest projects and get inspired



## Licensed and Insured



### Brookfield

☎ 262-309-2377

📍 2970 N Brookfield Rd  
Suite 202, Brookfield, WI  
53045

### Wausau

☎ 715-571-1506

📍 3315 Terrace Ct, Suite E,  
Wausau, WI 54401

“

Our experience with Arik, has been nothing short of remarkable. The process, from the initial consultation to the final construction, was flawlessly handled, ex... [Read More](#)

-Kristilynn Smukowski

“

From start to finish the team at Everlast was fantastic! Matt and Arik were very friendly, knowledgeable, and professional. They responded quickly to question a... [Read More](#)

-Eric & Krista Scharpf

“

I am a Director of a Summer Camp in northern Woodruff, WI. We hired Arik Hertz and his crew from Everlast Structures to build a large storage building AND a mai... [Read More](#)

-Eric Roche

